



BALLERINA BELLA

Musica di
S. CALANDI
M. CARRARA

Mazurca **Introd.**

Re7 Sol

8^a sopra

Sol Re7

b.s. Sol

b.s. Sol7 Do

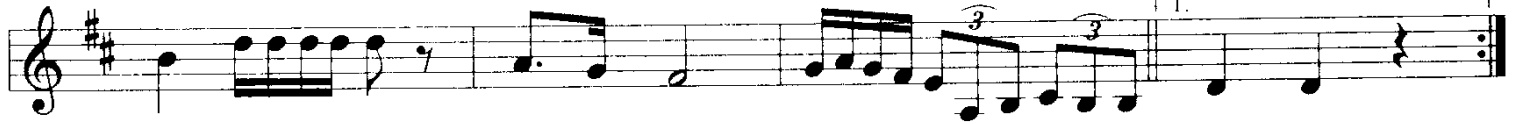
Sol Re7 Sol Sol

Re La7

Re

Re7 Sol

8^{va}



Re

La⁷

Re

8^{va}

ENTRATA

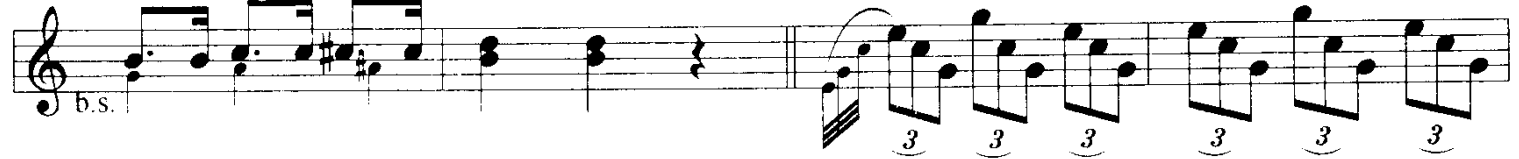


1^a Parte poi
ENTRATA
TRIO

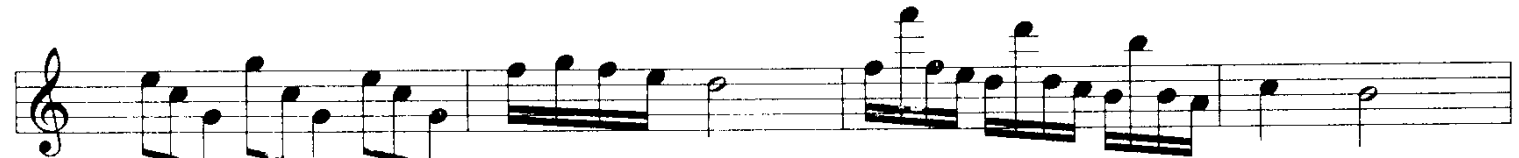
Re

Sol⁷

TRIO



Do



Sol⁷



Do

Do⁷



Fa

Do

Sol⁷

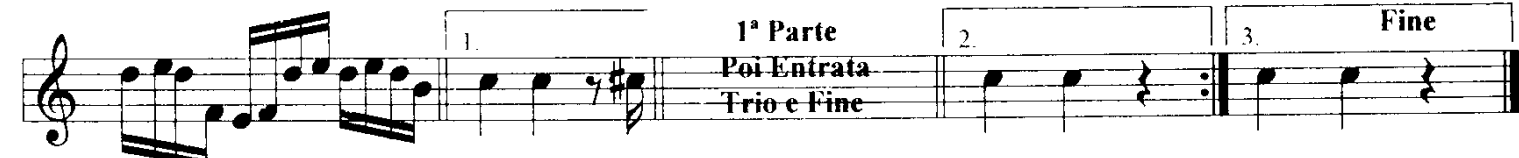


Do

7

Fa

Do



1^a Parte
Poi Entrata
Trio e Fine

Fine

Sol⁷

Do

Do

Do Do